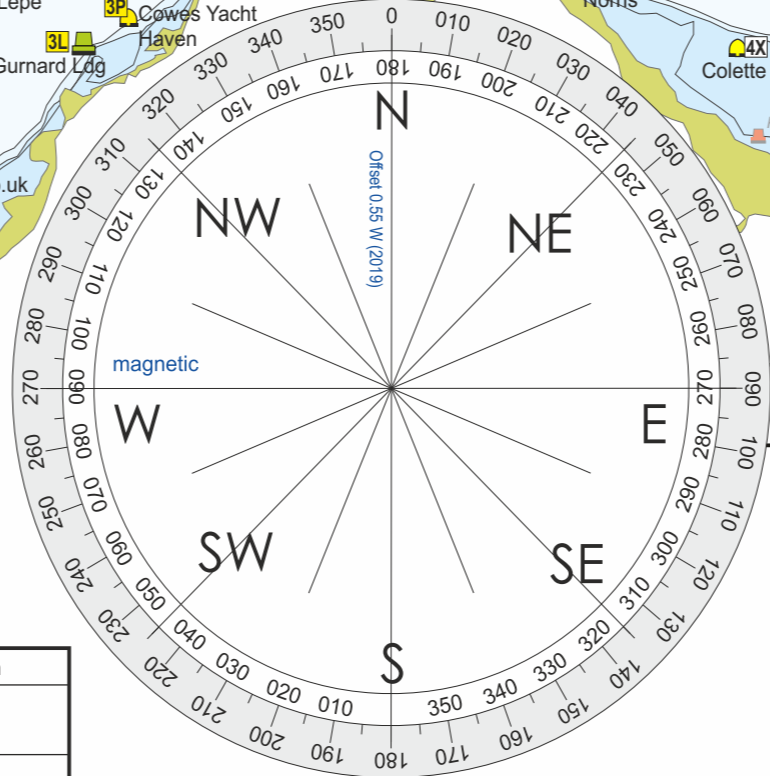
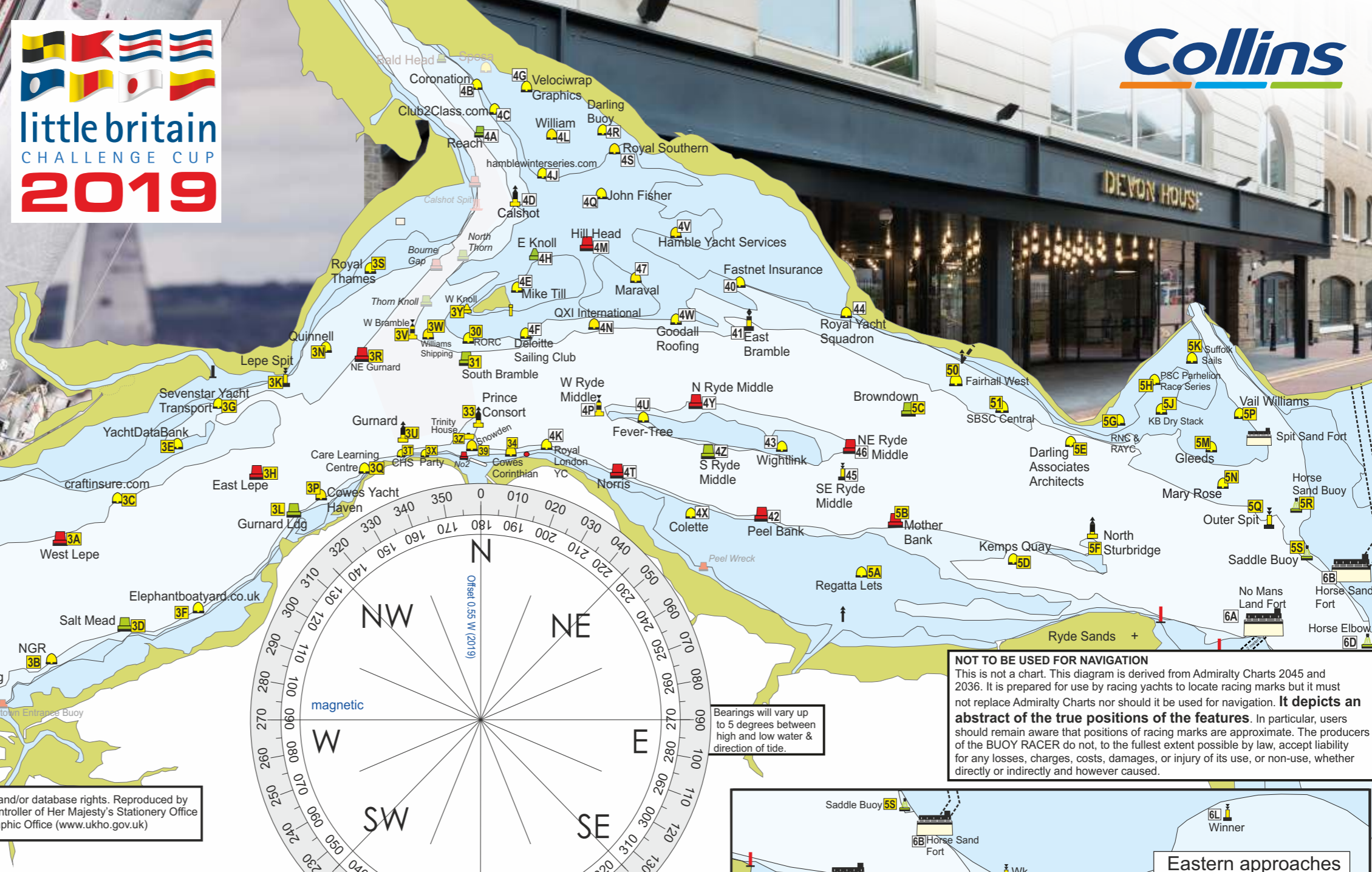


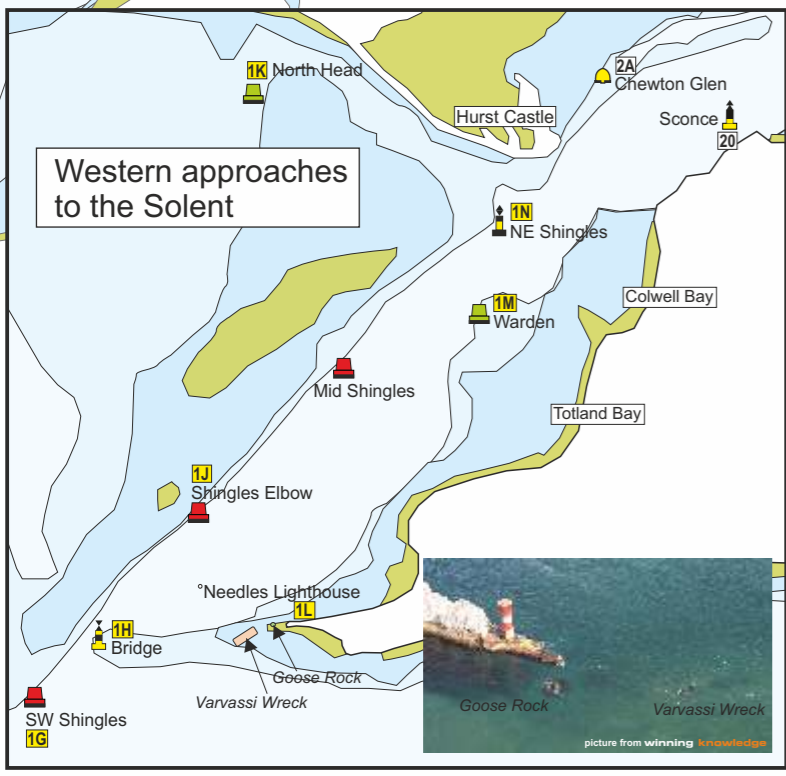
BUOY RACER 2019

Bearings will vary up to 5 degrees between high and low water & direction of tide.

NOT TO BE USED FOR NAVIGATION
 This is not a chart. This diagram is derived from Admiralty Charts 2045 and 2036. It is prepared for use by racing yachts to locate racing marks but it must not replace Admiralty Charts nor should it be used for navigation. **It depicts an abstract of the true positions of the features.** In particular, users should remain aware that positions of racing marks are approximate. The producers of the BUOY RACER do not, to the fullest extent possible by law, accept liability for any losses, charges, costs, damages, or injury of its use, or non-use, whether directly or indirectly and however caused.

© Crown Copyright and/or database rights. Reproduced by permission of the Controller of Her Majesty's Stationery Office and the UK Hydrographic Office (www.ukho.gov.uk)



Designation	P or S	Mark name or position

www.collins-construction.com
 www.littlebritain.co.uk

@CollinsConLtd @lbcc_sailing

- P Preparatory signal
- I Flag round the ends if over 1 min before the start
- Z Flag 20% place penalty if over 1 min before the start Also carries forward to a restarted race
- Black flag disqualified if over 1 min before the start
- X Individual recall.
- General recall. Warning signal 1 minute after removal
- M The object displaying this signal replaces a missing mark
- L Ashore: A notice to competitors has been posted
- This race committee boat is in position at the finishing line
- C position of the next mark has changed
- F often hoisted to show a start is imminent see S's
- S The course has been shortened.
- Y Wear personal buoyancy
- U Flag disqualified if OCS in 1 min before start does not carry forward

