

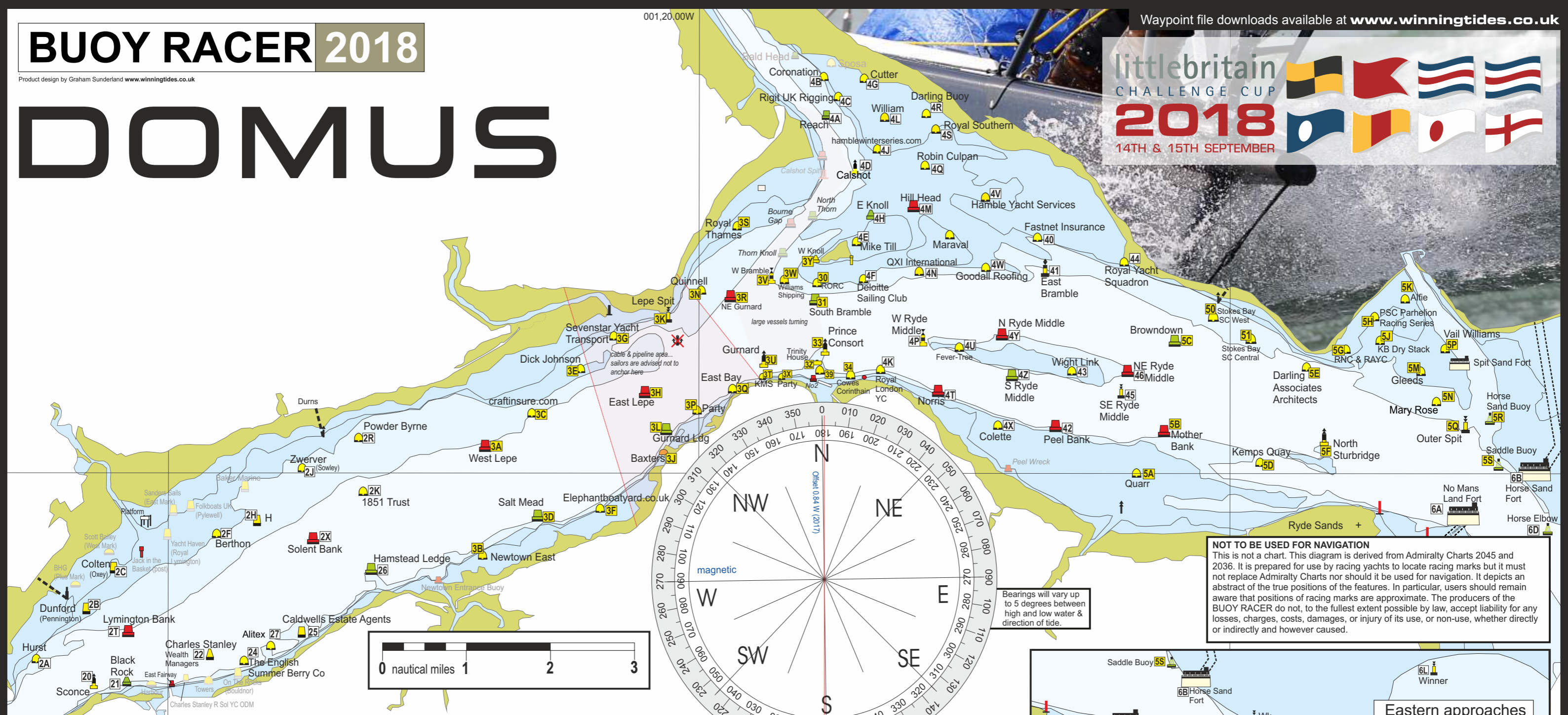
BUOY RACER 2018

Product design by Graham Sunderland www.winningtides.co.uk

DOMUS

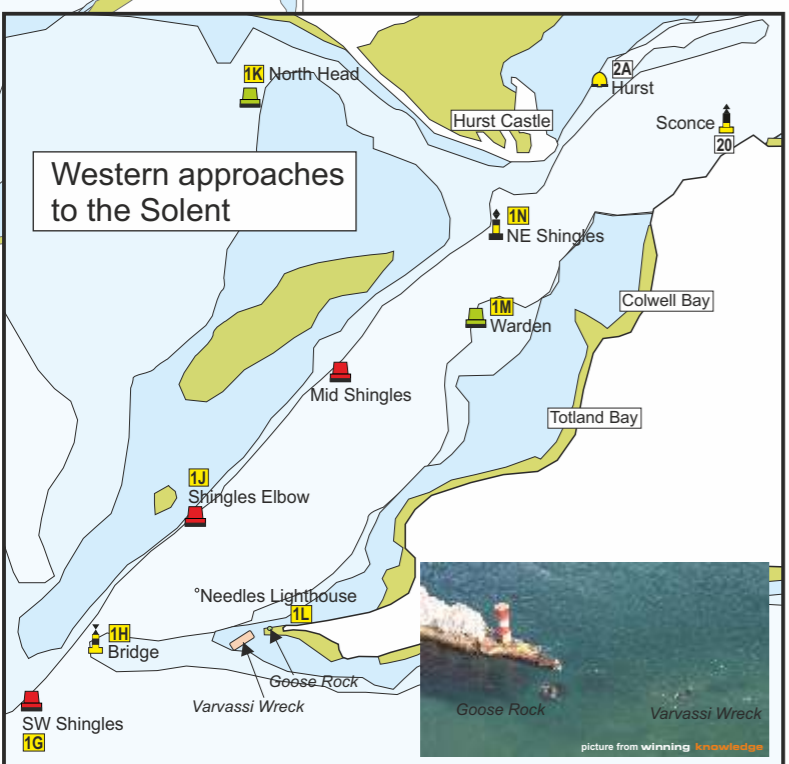
Waypoint file downloads available at www.winningtides.co.uk

littlebritain
CHALLENGE CUP
2018
14TH & 15TH SEPTEMBER



NOT TO BE USED FOR NAVIGATION
This is not a chart. This diagram is derived from Admiralty Charts 2045 and 2036. It is prepared for use by racing yachts to locate racing marks but it must not replace Admiralty Charts nor should it be used for navigation. It depicts an abstract of the true positions of the features. In particular, users should remain aware that positions of racing marks are approximate. The producers of the BUOY RACER do not, to the fullest extent possible by law, accept liability for any losses, charges, costs, damages, or injury of its use, or non-use, whether directly or indirectly and however caused.

Bearings will vary up to 5 degrees between high and low water & direction of tide.



Designation	P or S	Mark name or position

Designation	P or S	Mark name or position

